



## SANT' ANTIN WASTE TREATMENT PLANT EMERGENCY RESPONSE PLAN

Prepared by:

  
Stefan Salomone  
Senior Manager – Health & Safety

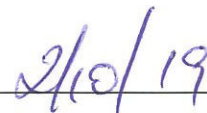
Reviewed by:

  
Christopher Grech  
Facility Manager

Approved by:

  
Tonio Montebello  
Chief Executive Officer

Date:

  
2/10/19

Copyright of this document and its contents rests solely with WasteServ Malta Ltd. Unauthorised reproduction of this document or communication of its contents to third parties, without written permission, is strictly forbidden. This confidential document may be passed to third parties only under written instructions from the Directors of WasteServ Malta Ltd. Users/receivers of such documentation are still bound by confidentiality if these documents are in their possession. Any third parties, divulging information from this document, without the written consent of the Directors of WasteServ Malta Ltd will be prosecuted.

## 1 CHANGE HISTORY

---

Rev No.	Description of Change	Date
0	First issue	24.08.2015
1	Update in Section 6.3 following comments received by the Civil Protection Department	22.09.2015
2	Update in procedures to include fighting larger scale fires. Moved some content to Appendices.	27.09.2019

## 2 TABLE OF CONTENTS

---

<b>1</b>	<b>CHANGE HISTORY .....</b>	<b>2</b>
<b>2</b>	<b>TABLE OF CONTENTS .....</b>	<b>3</b>
<b>3</b>	<b>LIST OF APPENDICES.....</b>	<b>4</b>
<b>4</b>	<b>INTRODUCTION .....</b>	<b>5</b>
4.1.	AIMS.....	5
4.2.	LIMITATIONS.....	5
4.3.	NOTES.....	5
<b>5</b>	<b>DEFINITIONS .....</b>	<b>6</b>
5.1.	EMERGENCY RESPONSE TEAM .....	6
5.2.	TRAFFIC CONTROL .....	6
5.3.	ASSEMBLY POINT .....	6
5.4.	MEETING POINT .....	6
5.5.	STAFF.....	6
5.6.	CHIEF OFFICER STRATEGY AND IMPLEMENTATION .....	6
5.7.	CONTRACTORS .....	6
5.8.	VULNERABLE PERSONS.....	7
5.9.	CIVIL PROTECTION DEPARTMENT (CPD) .....	7
5.10.	OCCUPATIONAL HEALTH & SAFETY AUTHORITY (OHSA).....	7
5.11.	ENVIRONMENT AND RESOURCES AUTHORITY (ERA) .....	7
5.12.	FIRE AND/OR EXPLOSION.....	7
5.13.	MAJOR INJURY .....	8
5.14.	MAJOR SPILL .....	8
<b>6</b>	<b>ACTIONS TO BE TAKEN .....</b>	<b>9</b>
6.1.	FIRE .....	9
6.2.	INJURY.....	13
6.3.	SPILL.....	14
6.4.	LIST OF PERSONNEL TO BE KEPT ON SITE .....	15
<b>7</b>	<b>NOTIFICATIONS.....</b>	<b>16</b>

### 3 LIST OF APPENDICES

---

Appendix I	Controlled Document 47a Contact Numbers
Appendix II	Controlled Document 47b SA Fire Safety Drawings
Appendix III	Controlled Document 47c Emergency Equipment
Appendix IV	Controlled Document 47d Chemicals
Appendix V	Controlled Document 47e ATEX Zones

## 4 INTRODUCTION

---

The plan is intended to set up standard procedures in the event of emergencies, allocating responsibilities and the immediate action to be taken in the event of fire, bomb threat, injury, and oil or chemical spill, in order to minimise the consequences of any incident.

The plan will ensure that all efforts are co-ordinated through one point and to a common aim.

### 4.1. Aims

- Ensuring safety of personnel (plant personnel, public and response personnel).
- Minimising or avoiding damage to plant, third party property and to the environment.
- Minimising or avoiding financial loss.

### 4.2. Limitations

The scope of this plan is limited to fire, major injury, and major chemical spills and will be implemented as determined by the Facility Manager, Plant Engineer, or Head of Shift on duty (as applicable). However the principles involved are adaptable to other emergencies.

### 4.3. Notes

This plan has been distributed to the following authorities:

- Environment and Resources Authority (ERA)
- Occupational Health & Safety Authority (OHSA)
- Civil Protection Department (CPD)

The Civil Protection Department (CPD) has also based its response to incidents according to our emergency plan.

Controlled copies of this document shall be made available at the Control Room, Fire Pump Room, Security Office and at the Weighbridge.

## 5 DEFINITIONS

---

### 5.1. Emergency Response Team

The **Emergency Response Team (ERT)** shall be made up of a group of key employees selected in accordance to their role and/or their physical location within the company. All members of the ERT shall receive adequate training in their role.

The **ERT (Affected Area)** is the member of the ERT who is closest to the area where the emergency occurred.

### 5.2. Traffic Control

In case of emergencies, no vehicles will be allowed to enter or leave the site unless this is necessary to make way for emergency services to enter the facility.

This task will be handled by the **Emergency Response Team** under the direction of the **Head of Shift, Plant Engineer/s** and/or **Facility Manager** (depending on whether the latter are on site).

### 5.3. Assembly Point

The Assembly Point at the Sant' Antnin Waste Treatment Plant (SA) is located near the WSC water reservoirs.

The Assembly Point (AP) is clearly indicated with a green sign and wording '*Assembly Point*'.

### 5.4. Meeting Point

The Meeting Point is where the Emergency Response Team meets during an emergency. The Meeting Point (MP) at SA is located near the fire pump room.

### 5.5. Staff

All personnel not forming part of the **Emergency Response Team**.

### 5.6. Chief Officer Strategy and Implementation

In case of an emergency situation, communications with the media and the general public will be handled by the **Chief Officer Strategy and Implementation (COSI)** only.

In addition to the **COSI**, the **Company Secretary** is to be informed of the incident/emergency as soon as possible.

### 5.7. Contractors

Contractors working on-site must be briefed on safety procedures on their first day at the facility and prior to start working.

## 5.8. Vulnerable persons

Vulnerable persons are those persons who are at more risk than others in cases of an emergency. This includes but is not limited to visitors, young persons, pregnant or breastfeeding workers, persons with different abilities, and injured persons.

The ERT must ensure the safety of any vulnerable persons within their area of control by assigning personnel to assist them throughout the emergency.

## 5.9. Civil Protection Department (CPD)

The Civil Protection Department (CPD) are responsible for fire fighting and rescue operations, emergency planning and handling of major incidents.

CPD can be contacted through the general emergency number:

**Emergency: 112**

## 5.10. Occupational Health & Safety Authority (OHSA)

The OHSA is the local Authority for all matters relating to Health & Safety at work. The authority must be alerted to any serious incident and injuries to workers.

## 5.11. Environment and Resources Authority (ERA)

ERA is responsible for general environmental issues. The authority must be informed by the Technical Competent Person in case of fire and/or any spills reaching sewer, road, soil and/or sea.

## 5.12. Fire and/or Explosion

A fire or explosion could generate highly toxic or corrosive fumes. Flying debris might result from explosions or compressed gas cylinder failure. Process system disruption, loss of plant control, and breach of process system boundaries could result from the flying debris. In addition, heavy smoke could disrupt the operation of the ventilation system.

For the purpose of the SA Emergency Response Plan, fires have been categorised into three (3) tiers as follows:

- Tier 1 Fires – these are small fires which can be easily extinguished using portable fire extinguishers;
- Tier 2 Fires – these are larger fires which require the use of fire water, but which do not exceed an area of 8m<sup>3</sup>.

- Tier 3 Fires – these are large fires which require the use of fire water and exceed an area of 8m<sup>3</sup>.

### 5.13. Major Injury

A major injury is an injury which results in one or more of the following:

- fracture of the skull, spine or pelvis;
- fracture of any bone other than the wrist or ankle;
- amputation of a hand or foot;
- the loss of sight of an eye; or
- any other injury which results in the person injured being detained in hospital for more than twenty-four hours other than for observation.

### 5.14. Major Spill

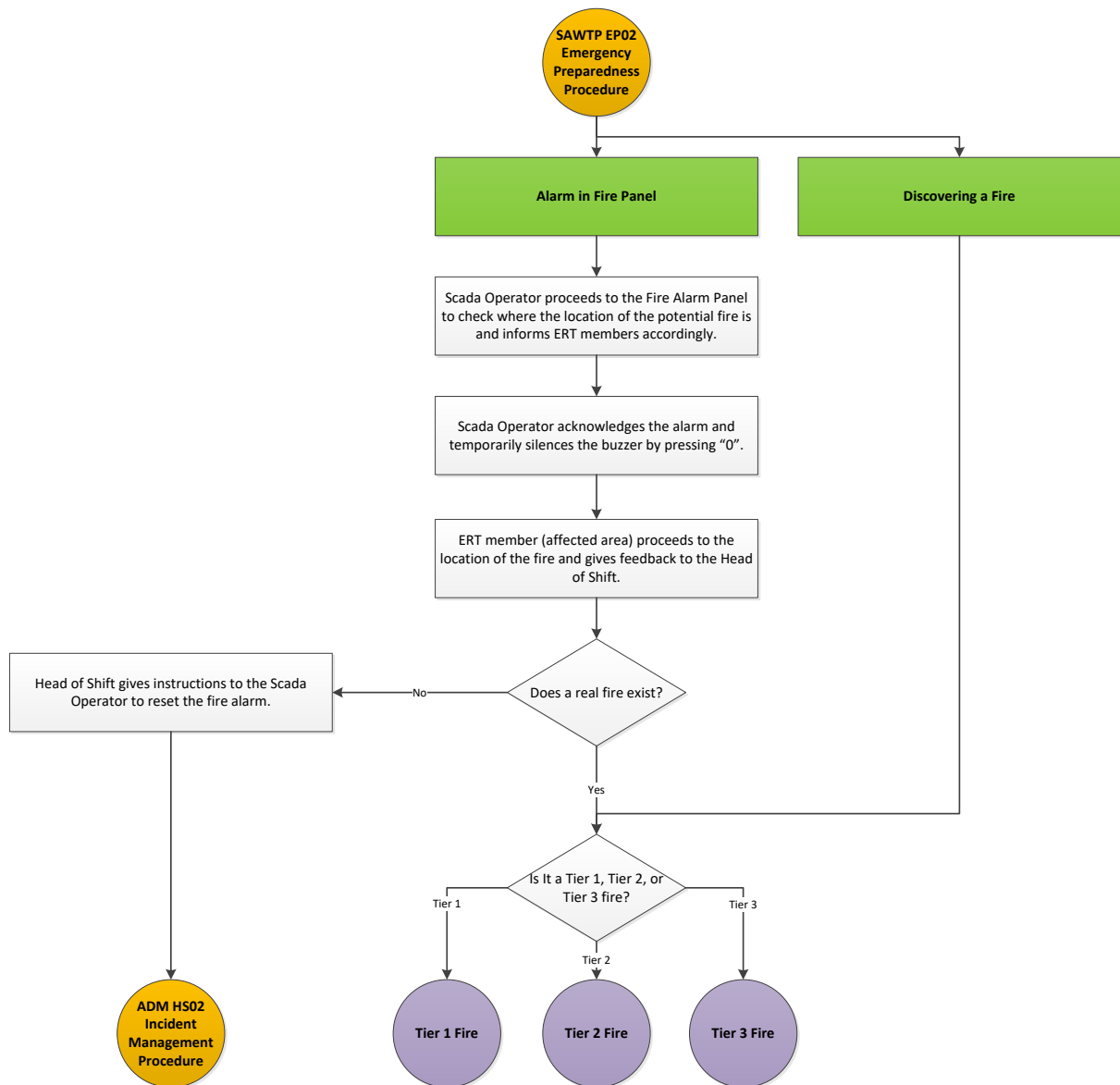
A major spill is a spill of a chemical exceeding 10L.

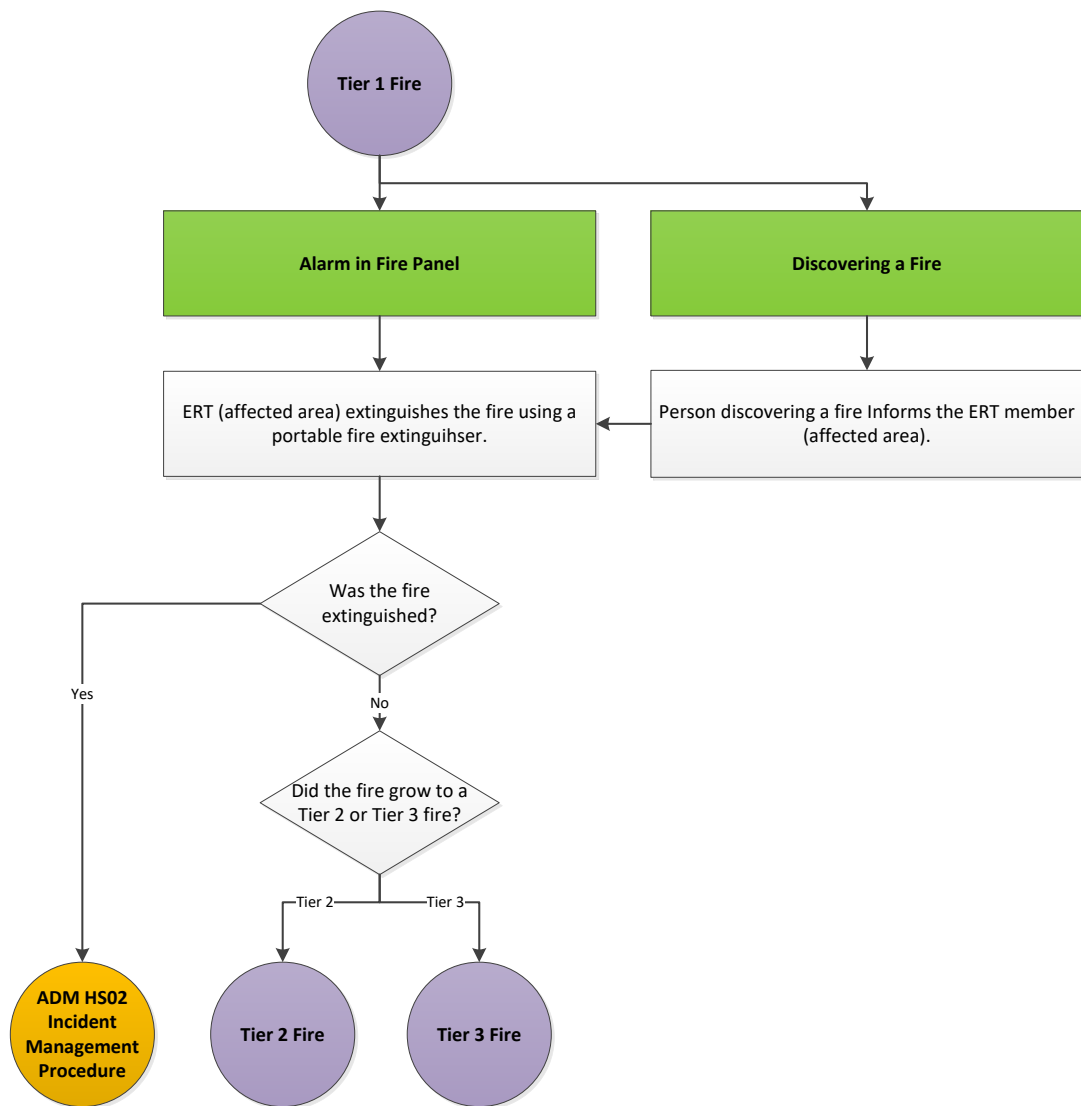


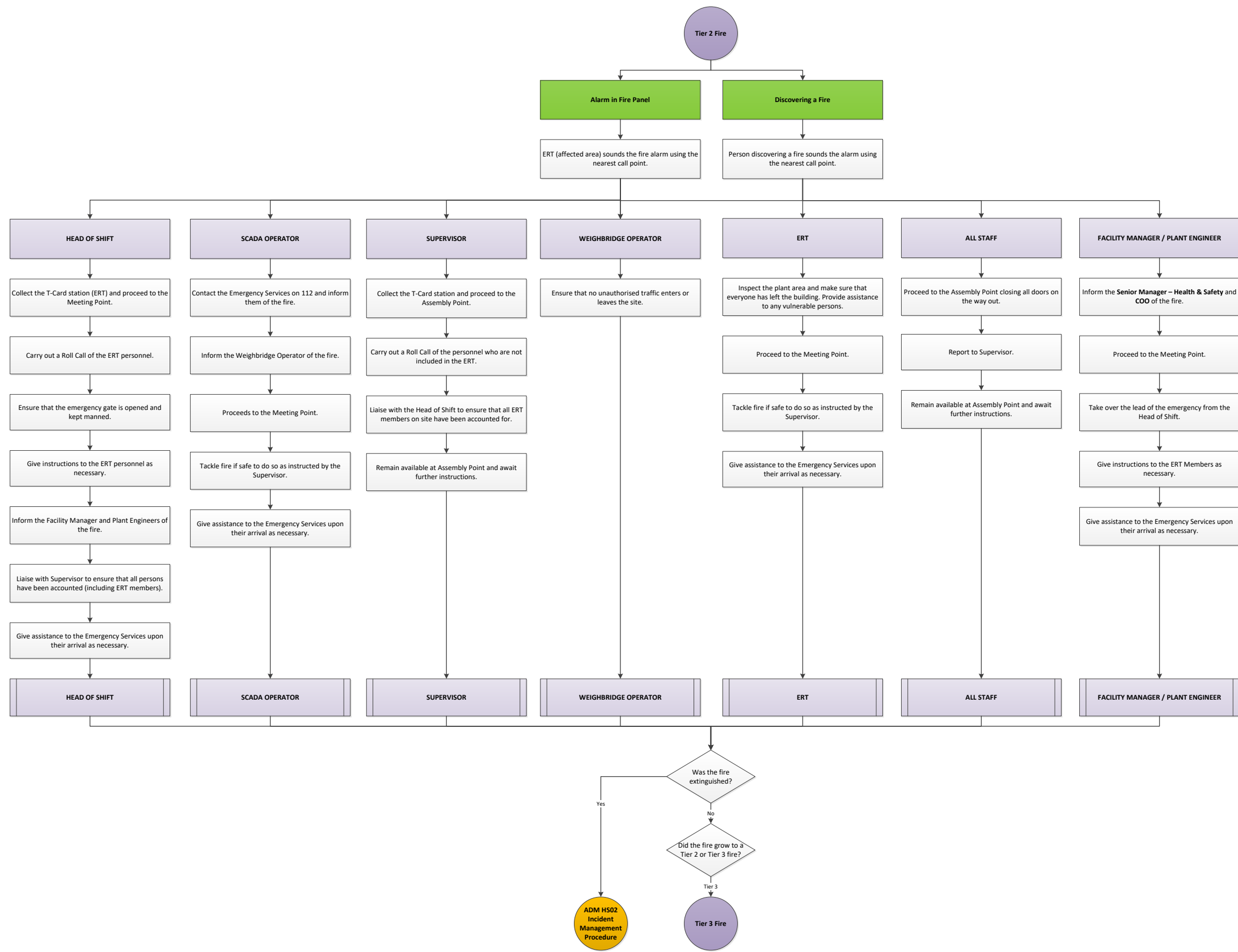
## 6 ACTIONS TO BE TAKEN

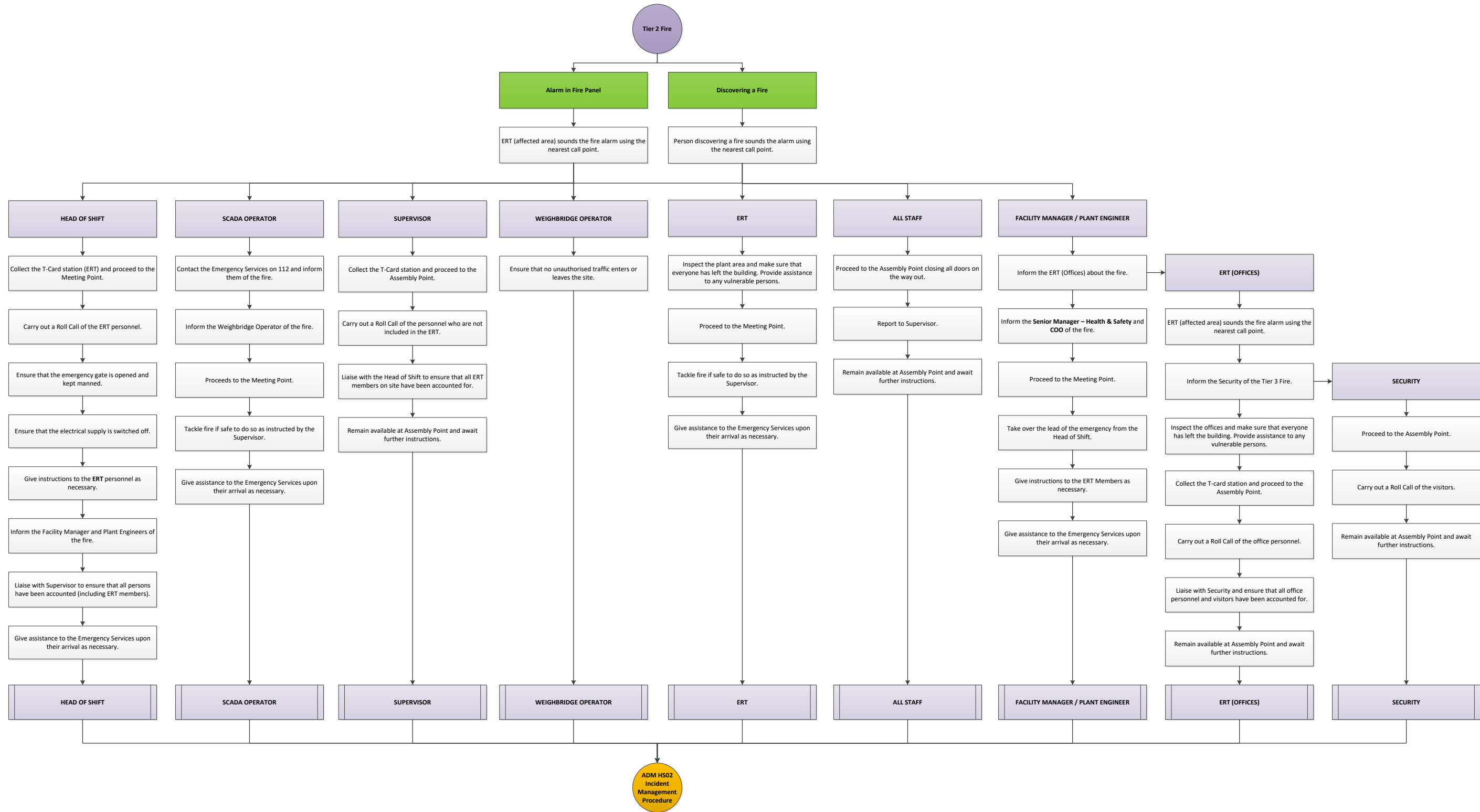
This section describes the actions to be taken by the persons defined above.

### 6.1. Fire

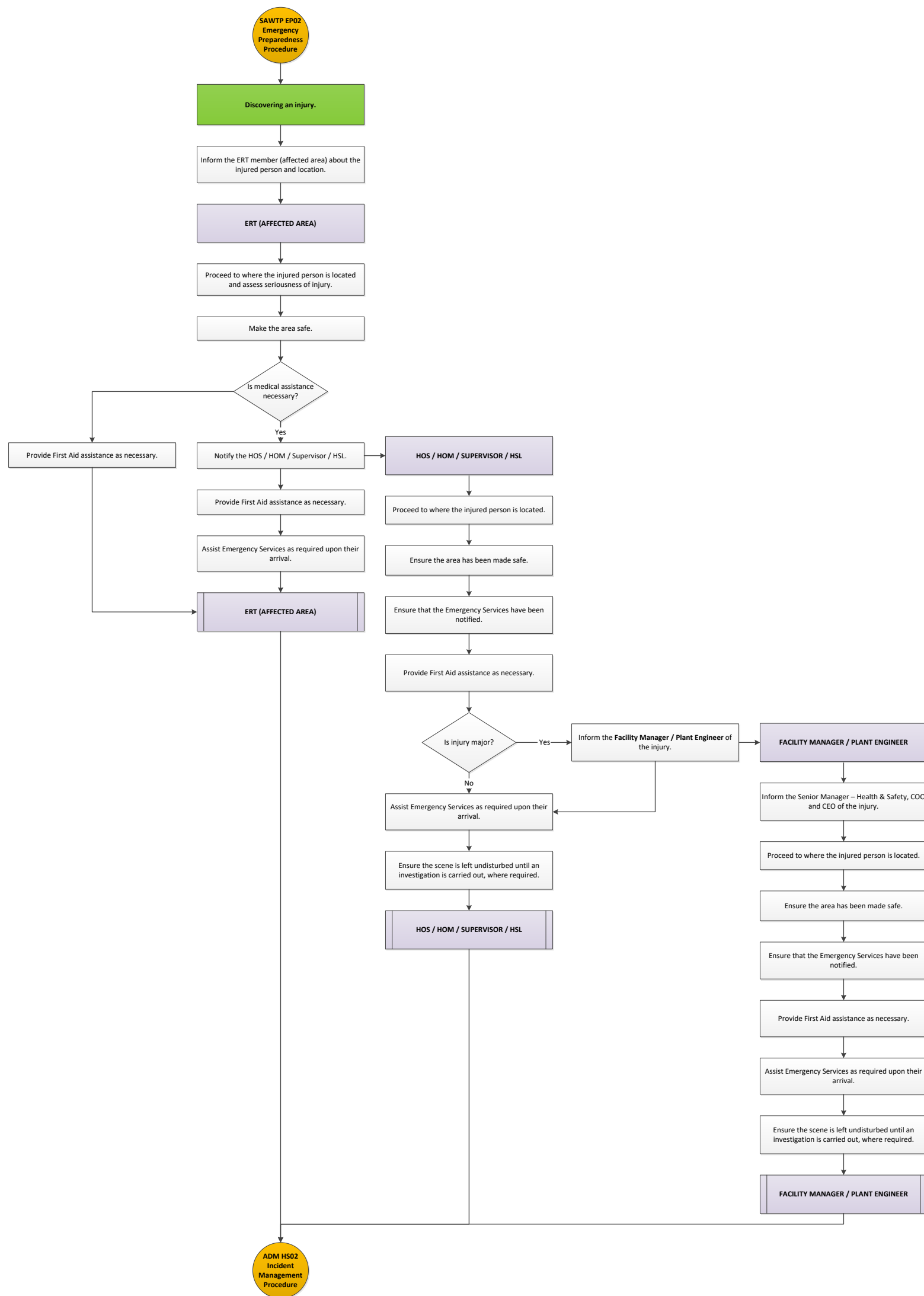




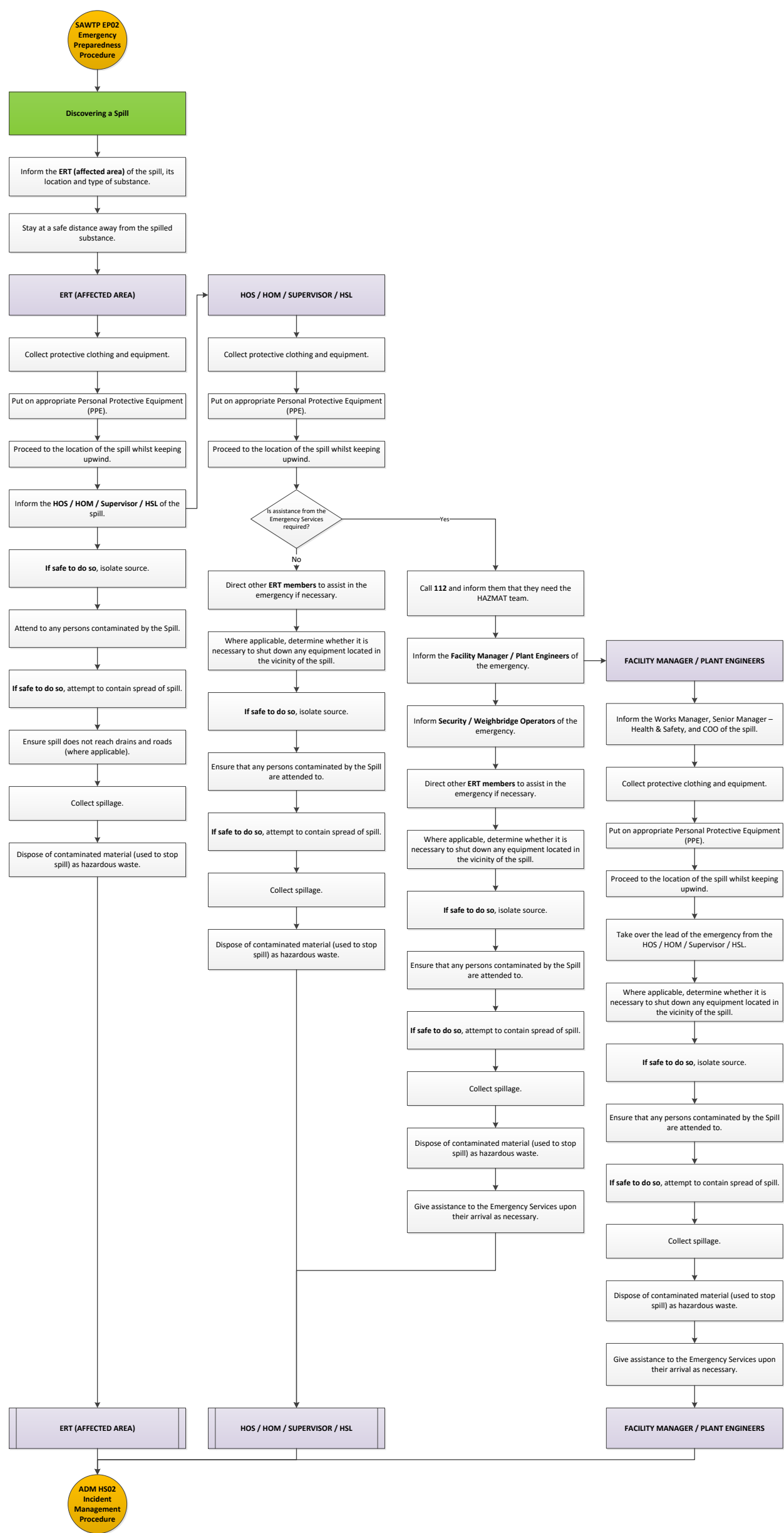




## 6.2. Injury



6.3. Spill



#### 6.4. List of personnel to be kept on site

- Members of the Emergency Response Team
- Security personnel
- Weighbridge Operator/s
- Storekeeper/s
- Cleaner/s
- Drivers/Messengers

## 7 NOTIFICATIONS

---

The table below shows the list of personnel and agencies/authorities that must be notified of incidents or emergency situations. Phone numbers are listed in Appendix I for ease of reference.

	Fire	Injury	Spill
Facility Manager	✓	✓	✓
Head of Shift	✓	✓	✓
Chief Operations Officer (COO)	✓	1	✓
Senior Manager – Health & Safety	✓	✓	✓
ERA	✓		2
Occupational Health & Safety Authority (OHSA)		1	
Police		1	
Transport Malta (TM)			2
Water Services Corporation (WSC)			3

**Note:**

[1] Notify only if injury is major.

[2] Notify if spill reaches land (including unlined cells), road and/or sea.

[3] Notify if spill reaches the drains.

As per internal procedure, incidents and/or accidents must be reported to direct superior and/or management.

The management shall in turn notify the governing authority of the incidents or accidents.